



February 23, 2022 | The Alliance
for Resource Equity

Prioritizing Wraparound Supports to Advance Student Equity

Sarah Mehrotra, Data & Policy Analyst

The Education Trust



The Education Trust



Sarah Mehrotra

Data & Policy Analyst
The Education Trust

Welcome! In the chat please share where you are joining from and one word that comes to mind when you hear “wraparound supports.”

Session Agenda

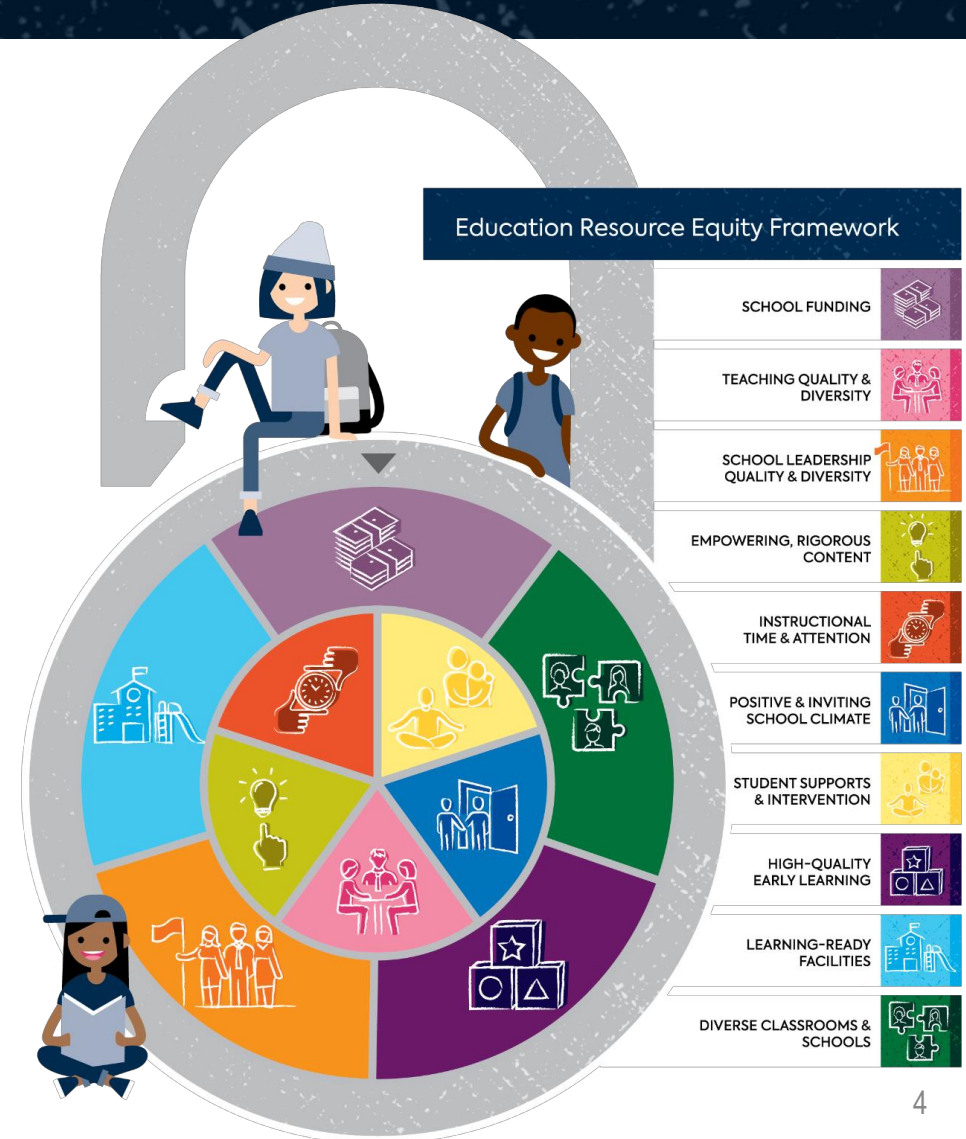


- About resource equity
- What are wraparound services?
- What are the critical components of an equitable MTSS system?
 - Learning from the field: A Conversation with Carmen Williams
- Deep dive: What do equitable wraparound supports look like?
- Closing

Definition of Education Resource Equity

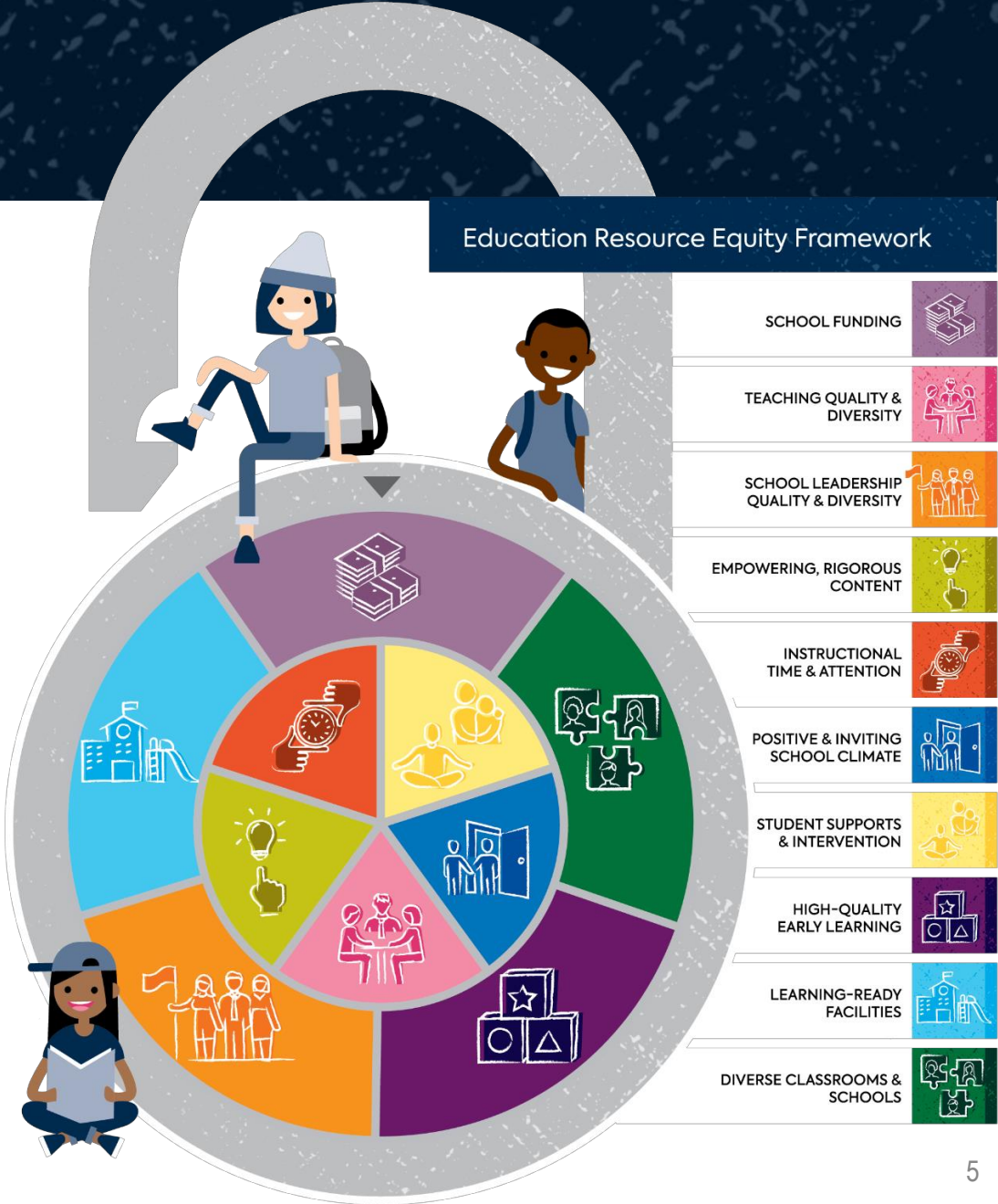
When schools, systems, and communities work together to mobilize the right combination of resources that create high-quality learning experiences for all students, that is what we call **education resource equity**.

Education resource equity is what we need to make sure that school unlocks every child's power to live a life of their choosing — and that race and family income no longer predict a student's life trajectory.



Framework

Our framework includes 10 dimensions that equip you with a foundation for unlocking better, more equitable school experiences for children in your community.



Equitable Student Experiences: 10 Dimensions



SCHOOL FUNDING



TEACHING QUALITY & DIVERSITY



SCHOOL LEADERSHIP QUALITY & DIVERSITY



EMPOWERING, RIGOROUS CONTENT



INSTRUCTIONAL TIME & ATTENTION



POSITIVE & INVITING SCHOOL CLIMATE



STUDENT SUPPORTS & INTERVENTION



HIGH-QUALITY EARLY LEARNING



LEARNING-READY FACILITIES



DIVERSE CLASSROOMS & SCHOOLS

Goals of today's session

- Learn about why wraparound services are critical to COVID recovery.
- Examine the fundamental components of wraparound services.
- Hear from an expert about implementing Multi-Tiered Systems of Supports (MTSS) in a district serving students of color and students from low-income backgrounds.



SEAD: Social, Emotional, and Academic Development

CHANGING ADULT BELIEFS AND MINDSETS



FROM A DEFICIT-BASED MINDSET TO A STRENGTH-BASED MINDSET



FROM ONE-SIZE-FITS-ALL TO RECOGNIZING CULTURAL AND CONTEXTUAL INFLUENCES



FROM ALLOWING BIAS TO IMPACT STUDENTS TO TARGETED AND CONTINUOUS EFFORTS TO REDUCE BIAS

CHANGING SYSTEMS AND POLICIES



FOSTER STUDENT BELONGING



CHALLENGE STUDENTS TO REACH THEIR POTENTIAL



PROVIDE ACADEMIC AND HOLISTIC SUPPORTS

The pandemic has taken a toll on student mental health

New Research Shows How Bad the Pandemic Has Been for Student Mental Health

EducationWeek

Kids Aren't Alright: How students are adjusting after two years in a pandemic

89.1 WBOI
WBOI NEWS AND DIVERSE MUSIC

Two years into the pandemic, students still struggle with mental health

PBS
NEWS
HOUR

What are Wraparound Services?

A way to support children and **connect them** to the community to meet their needs.

Multi-Tiered Systems of Support (MTSS) are the **most common frameworks** that districts and schools use to provide wraparound services.

What are critical components of wraparound services?

Equitable MTSS system

A state council or commission for children

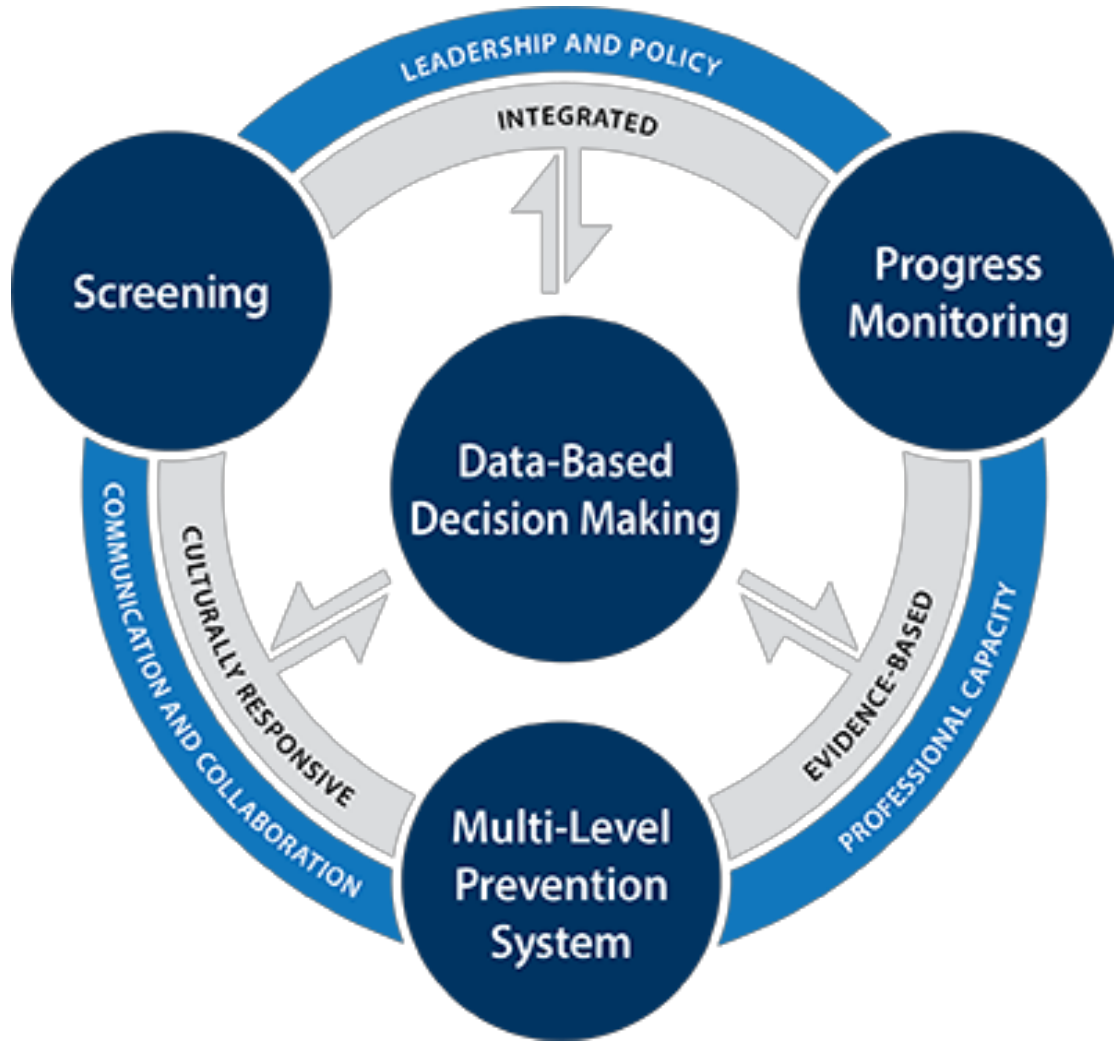
Health, housing, and medical supports

Nutritional equity

Equitable & inclusive learning environments

Adequate school counselors

What does an equitable MTSS system look like?



Source: [Center on Multi-Tiered Systems of Support](#) (AIR, 2021)

Learning from
the field:
Welcome,
Carmen
Williams!



Carmen Williams

**Superintendent in Residence
Medford Public Schools**

What are critical components of wraparound services?

Equitable MTSS system

A state council or commission for children

Health, housing, and medical supports

Nutritional equity

Equitable & inclusive learning environments

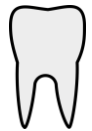
Adequate school counselors

Poll: To the best of your knowledge, does your school district provide any health services beyond the school nurse?

Health, Housing, and Medical Supports



Use of Medicaid for health services delivered to any Medicaid-enrolled students



Guidance/resources for providing oral health supports to students



Provide information for students experiencing homelessness

Did you know? The percentage of students with untreated cavities is twice as high for children from low-income households (25%) than children from higher-income households (12%)

Equitable & Inclusive Learning Environments

- Comprehensive anti-bullying policies that underscore vulnerable student groups
- Policies that support transgender K-12 students in participating in athletics and using facilities

Spotlight: Massachusetts

Massachusetts has a comprehensive anti-bullying policy that explicitly names groups of students most likely to be bullied and harassed and has a policy supporting transgender K-12 students in participating in athletics and using facilities based on their gender identity.

Did you know? 56% of LGBTQ+ students experience discrimination at school

Poll: How many states across the country have a policy that protect students against school lunch shaming?

Answer: 11 states prohibit school lunch shaming in any form.

Nutritional Equity

- Students can access nutrition services in their schools without stigmatization
- State has legislation that prevents districts and schools from punishing or shaming students from unpaid meal debt
- Requiring licensed early childcare providers to provide meals or snacks that meet nutrition guidelines.

Spotlight: Rhode Island

Rhode Island requires schools to participate in the National School Lunch Program and School Breakfast Program. All public schools are prohibited from stigmatizing children who are unable to pay for meals.

Advocacy
Tools:
*5 Things For
Advocates to
Know about
Equitable
School
Nutrition*

1

Families Can Access Many Forms of Food Assistance

2

Summer Meals Can Reach More Kids

3

Breakfast After The Bell Increases Student Access to Breakfast

4

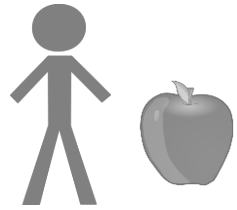
Local School Wellness Plans Can Engage Communities in Supporting Healthy Students

5

Schools Can Create Food Inclusive Environments

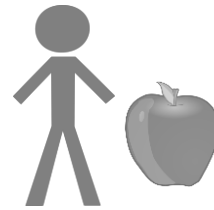
States, districts, and schools can use ESSER funds to support equitable nutrition in schools

North Carolina



- The North Carolina State Board of Education approved \$10 million to help schools recruit and retain food service workers.

Maryland



- Charles County Public Schools gave a one-time \$1,000 installments to food service workers.
- Hartford County gave a 8% raise for nutrition workers.

Utah



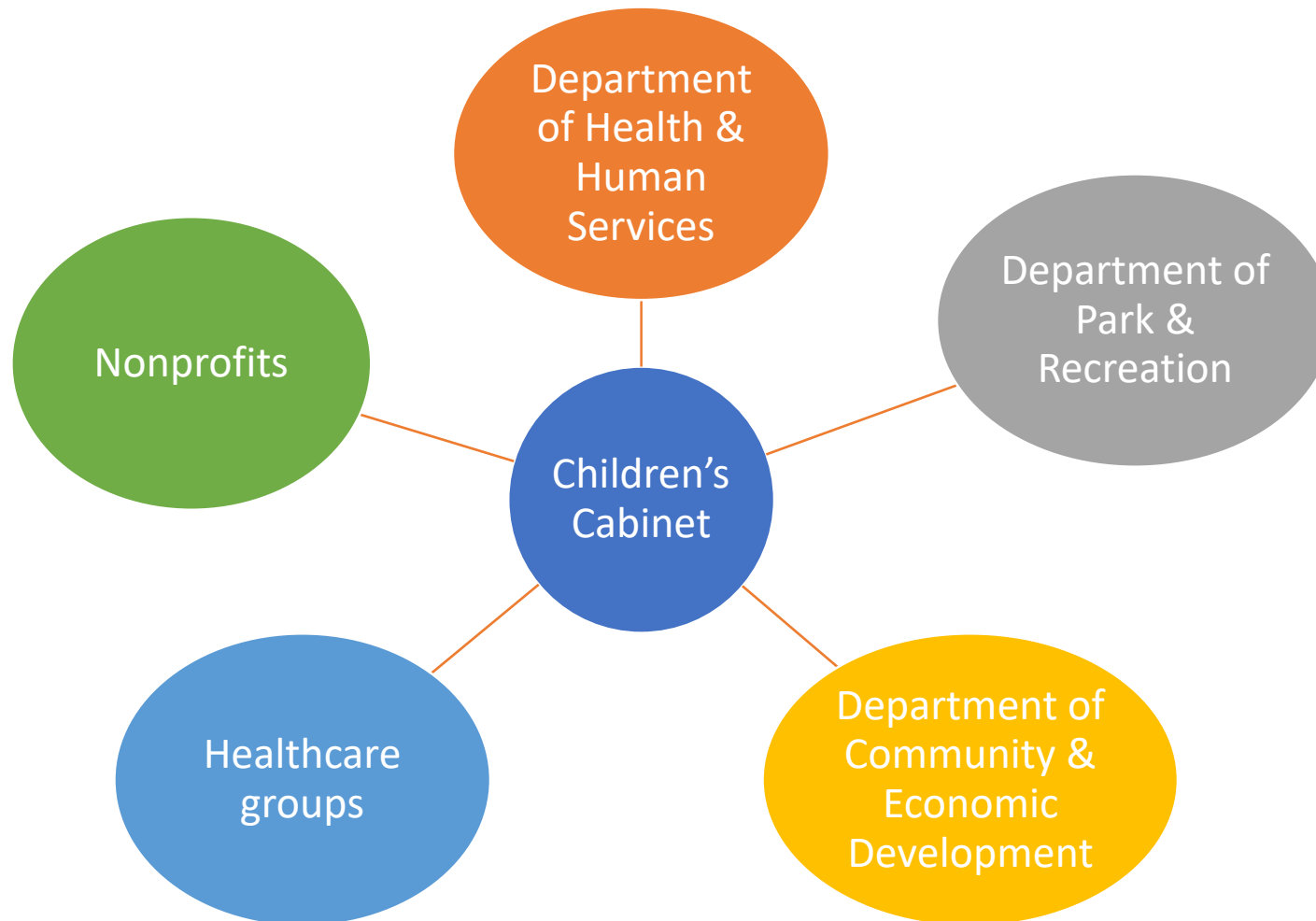
- The State Board of Education Child Nutrition Program is connecting with community partners to meet the needs of families that are food insecure and at risk.

Source: [WRAL: North Carolina State Board of Education Oks \\$10M for food service workers, other plans for federal stimulus money](#) (2021); [Charles County Public Schools](#), 2021; [Maryland Association of Counties](#), 2021; [Utah ESSER Plan](#), 2021

Adequate school counselors



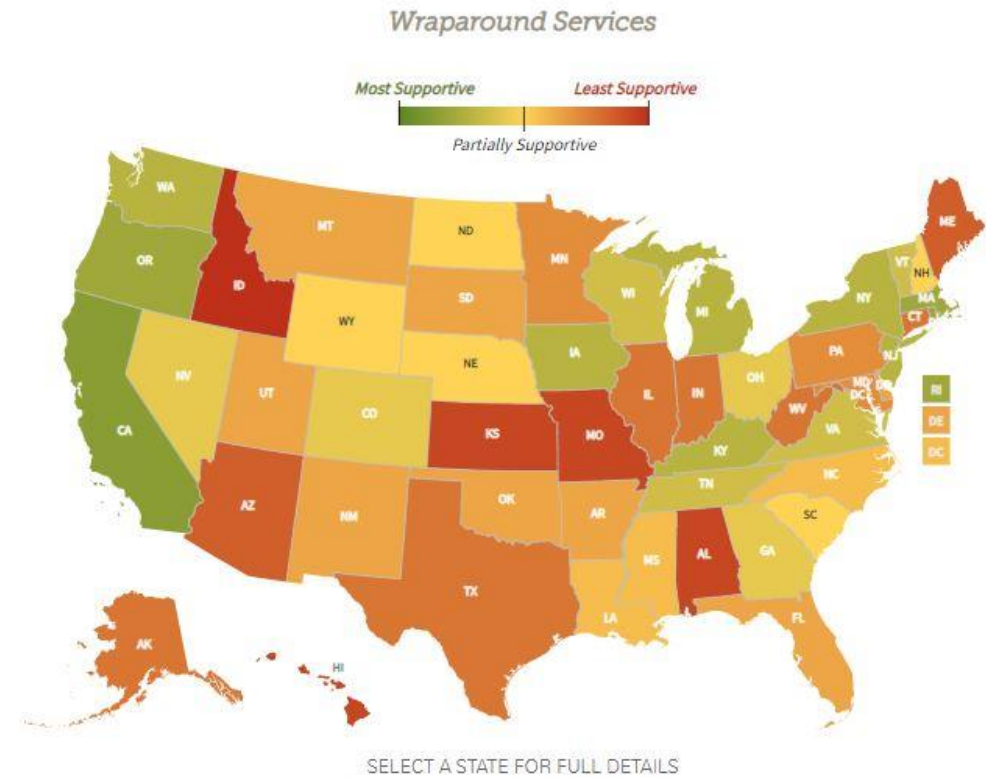
A state or local council or commission for children



How well is your state prioritizing wraparound services?

New Tool from Ed Trust!

<https://edtrust.org/is-your-state-prioritizing-sead/>



Questions?



How is your state prioritizing student nutrition?

Directions:

1. Go to <https://edtrust.org/is-your-state-prioritizing-sead/>
2. Click on “wraparound services”
3. Click on your state

In the chat:

1. What is one thing your state is doing well?
2. What is one area for improvement?

