


POSTGAME RECAP:


**TEXAS COMMISSION ON
COMMUNITY COLLEGE FINANCE**

FRIDAY, JUNE 24
AT 1–2PM CT

PRESENTED BY:



<https://edtrust.org/CommCollegeFinance>



VIRTUAL EVENT

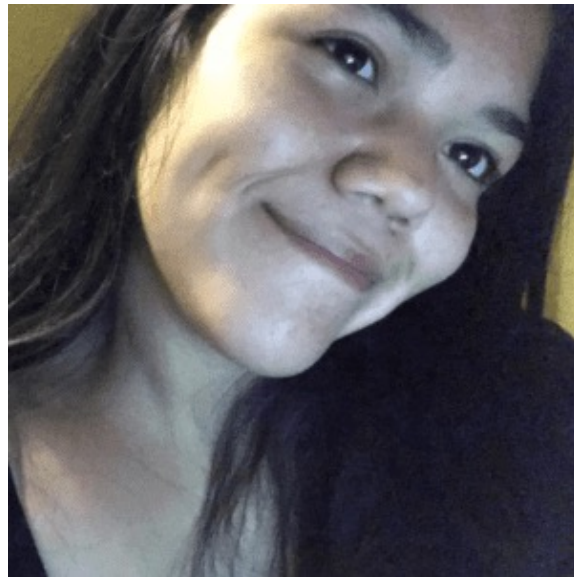
Welcome! Please share in the chat:

1. Name and community college (service area or affiliation)
2. Answer the poll question: Which best describes you?

Thank you



Stephanie Murphy
Commit Partnership
**Director, Education
Policy**



Rubesela Benitez
Young Invincibles
**Texas Youth
Advisory Board**



Sarah Jensen
Commit Partnership
Senior Consultant



Jonathan Feinstein
The Education Trust
Texas State Director



Today's Roadmap

1. Welcome and Introductions
2. Special Guest: Kristie Davis, Student Advisory Council
3. June 21 Meeting Recap
4. Next Steps & Resources

Special Guest: Kristie Davis



Chair's Key Principles

1. Funding should be based on outcomes and promote improvement by each college
2. Bolster workforce development and promote credentials of value to individuals and aligned with regional workforce needs
3. Ensure access to educational opportunities and encourage cross-institutional collaborations in the delivery of programs, including shared academic and workforce education programs
4. Affordability should be high priority and funding should recognize variations in costs of supporting students from diverse backgrounds

Agenda for June 21 Meeting



TEXAS COMMISSION ON COMMUNITY COLLEGE FINANCE
Chairman Woody Hunt

AGENDA

105 West 15th Street
John H. Reagan Building, Room 120
Austin, Texas

10:00 AM, Tuesday, June 21, 2022

Call to Order

Welcome & Remarks

Invited Testimony: Commissioner Harrison Keller, THECB

Invited Testimony: Dennis Jones, NCHEMS

Workgroup Updates

- College Operations - Dr. Steve Head
- Student Support - Dr. Brenda Hellyer
- Workforce Education - Dr. Mark Escamilla

Discussion on Workgroup Updates

Lunch Break

Invited Testimony: Workforce Panel

- Elizabeth McGee, Intel
- Stacy Putman, Ineos
- Dr. Erica Yu, UT Health

Invited Testimony: Dr. William Serrata, TACC

Invited Testimony: Texas Community College Student Advisory Council

- Victoria Hoover, Tyler Junior College
- La'Kristie Davis, Dallas College
- Isabel Torres, Austin Community College
- Cristina Navarro, El Paso Community College

Invited Testimony: Dr. Lori Taylor, TXCCCF Research Project

Discussion on Future Meetings

Adjournment

All meeting materials, including agendas, presentation slides, and archived videos, are posted here:

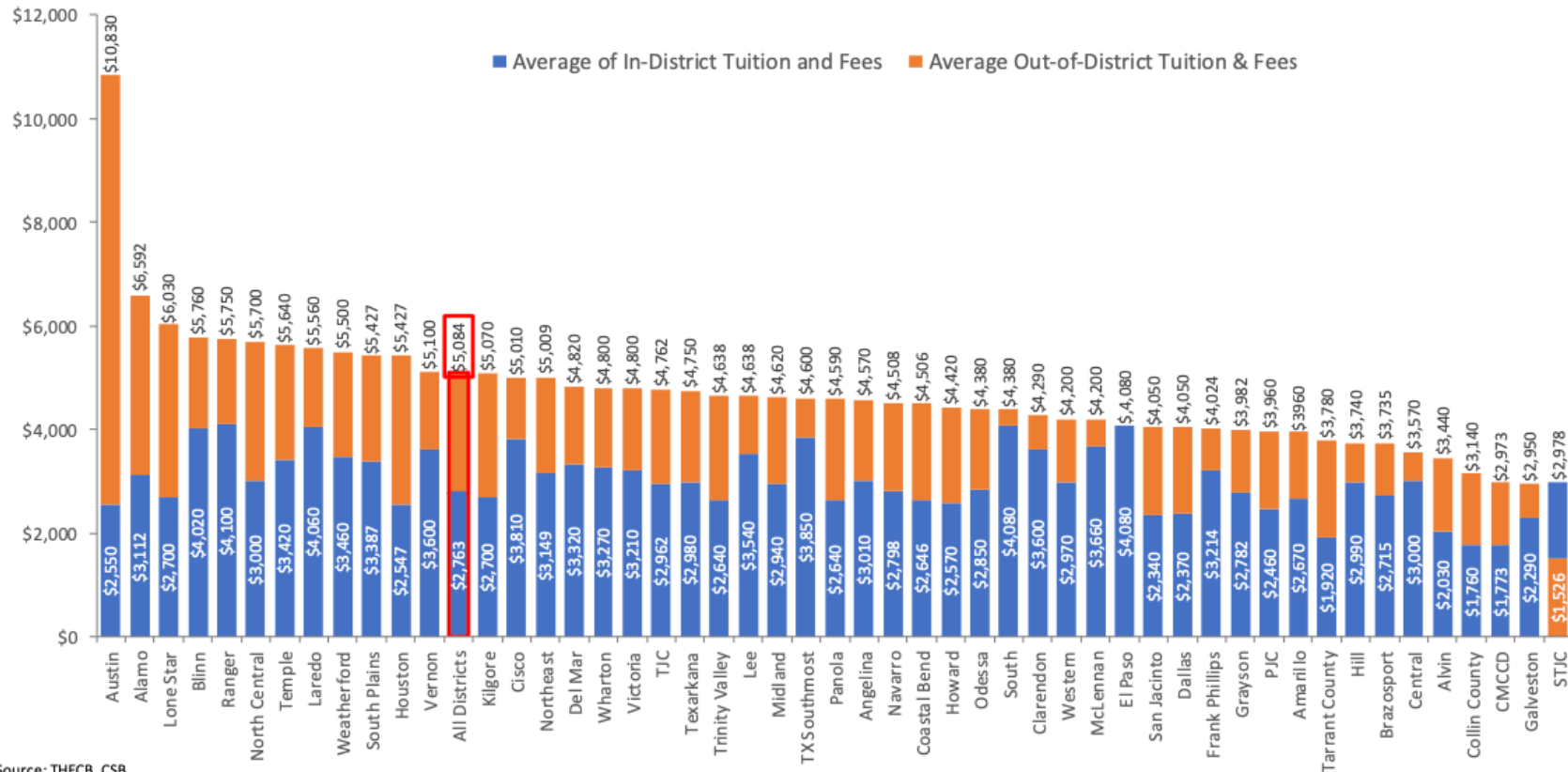
<https://www.highered.texas.gov/legislative-media-resources/texas-commission-on-community-college-finance/>

Highlight #1: The role of state funding, as proposed by Dennis Jones from NCHEMS.

1. Because community colleges are locally governed institutions, local funding should provide the funding required for base operations.
2. The state should “pay” for attainment and workforce outcomes – regardless of how the college produces them – with additional weights for “high priority” credentials and populations.
3. The state should promote affordability for students, especially those paying out-of-district tuition, by identifying alternative funding sources, providing additional student financial aid, or facilitating shared services.

Highlight #1: The role of state funding, as proposed by Dennis Jones from NCHEMS.

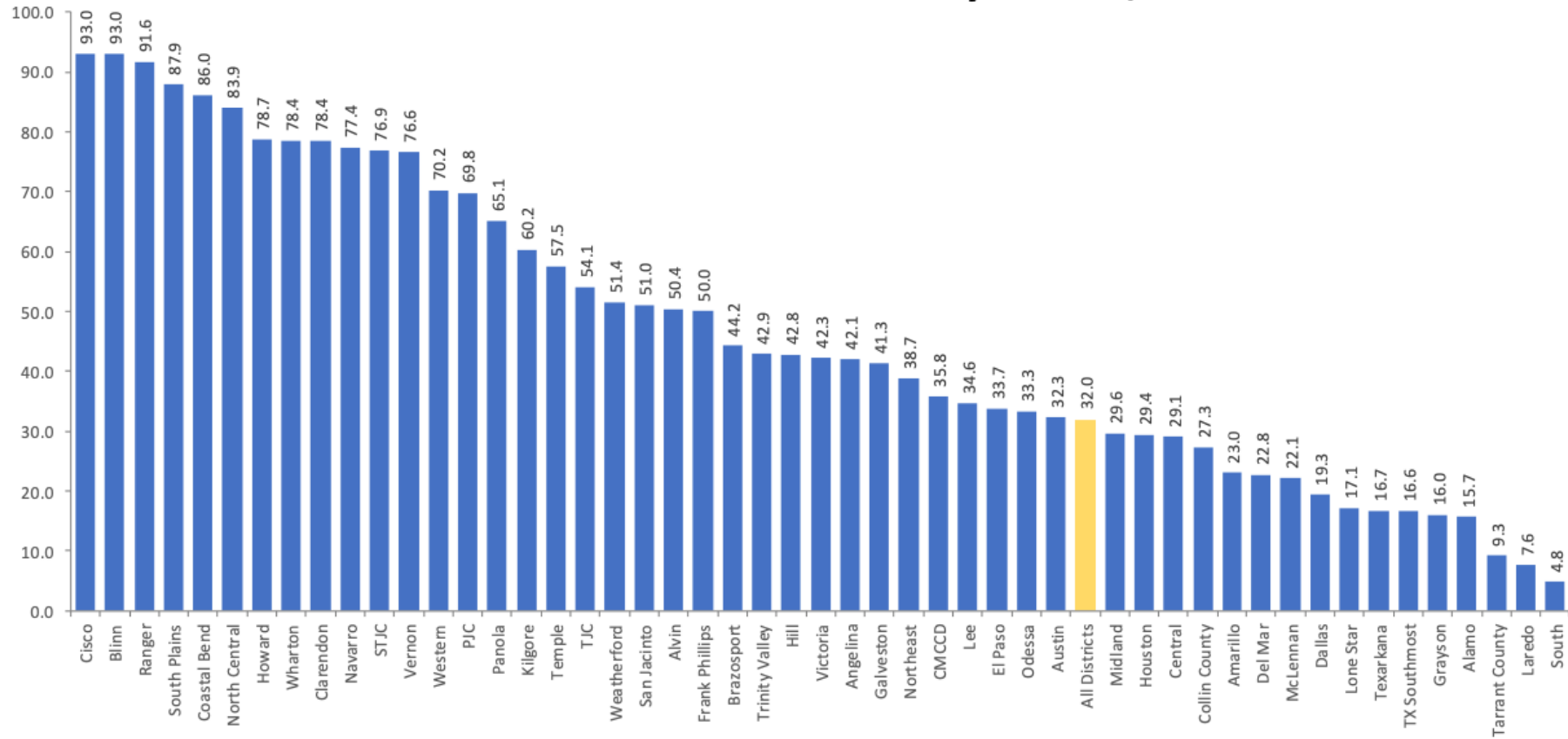
Average Tuition & Fee Charges by District and Residency Status, FY 2022



Source: THECB, CSB

Highlight #1: The role of state funding, as proposed by Dennis Jones from NCHEMS.

Percent Out-of-District Enrollments by District, FY 2021



Source: THECB, CBM001, Accountability Interactive System.

Poll Question: Who should bear the largest responsibility for funding community colleges?

Highlight #2: Apparent areas of alignment across workgroup “considerations.”

1. Significantly modify Student Success Points to deliver increased and consistent funding that reflects varying student needs and aligns to workforce needs.
2. Reward all credentials regardless of how they are produced (e.g., credit vs. non-credit), tiered by value returned to student employment and earnings.
3. Address structural barriers to dual credit access, equity and quality.
4. Incentivize the coordination of shared services to expand educational and workforce opportunities for students.

Highlight #2: Apparent areas of alignment across workgroup “considerations.”

COLLEGE OPERATIONS: CONSIDERATIONS

- Transition Student Success to Outcomes Funding
 - Significant enough to change behavior
 - More consistent funding
 - Reflect varying student needs and alignment to state/regional workforce demands
- Reflect on the particular challenges of small + rural colleges
 - Any support needs to also set expectations for local support
- Create incentives and coordination of shared services opportunities

WORKFORCE EDUCATION: CONSIDERATIONS

- Provide front-end capacity
 - Grant/other funding for start-up costs for certain institutions
 - Expectations for workforce-aligned credentials (jobs + higher wages)
- Adjust the current funding structure
 - Be agnostic of credit vs. non-credit, focus on workforce alignment
 - Job Placement + Wage Return
- Enhance data to facilitate workforce responsiveness
 - State and regional level
- Create incentives for expanded partnerships/shared services for training and jobs
- Strengthen alignment with high school
 - More structured dual credit
 - Workforce/CTE Pathways
 - Endorsements
 - Advising and other supports

7

STUDENT SUPPORT: CONSIDERATIONS

- Adjust base funding/contact hour funding for student demographics (similar to K12 concentration adjustment)
- Expand access and equity in dual credit
 - Develop a state plan and goals for access, outcomes +funding components
- Continue funding for TRUE based on track record and workforce needs in the state w/ seed money for starting up programs (small school capacity)
- Give CC's the ability to do Capital Construction Assistance Projects (CCAPs) to cover start up costs for workforce programs



11

STUDENT SUPPORT: CONSIDERATIONS CONTINUED

- Increase and modify outcomes-based funding/ student success points
 - Support collaboration, outreach, and support for students
 - Incent beneficial practices (pathways, co-req., structured dual enrollment, transfer)
 - Align to workforce needs (micro-credentials/workforce credentials/dual credit workforce credentials)
 - Include adjustments for student needs/ demographics (e.g., Pell-eligible to align with FAFSA requirement in HB3)
 - Incorporate a more empirically informed “point” structure (such as cost-based)

12

Discussion Question: What are your reactions to these considerations? Any that you are enthusiastic to see included? Any key details you are eager or anxious to see?

Student Advisory Council Testimony to Texas Commission on Community College Finance



VICTORIA HOOVER

Tyler Junior College

"I struggled to fulfill my potential in the Texas workforce for many years before returning to college to earn a degree that would pay me a livable amount. Adult nontraditional students are looking for a good ROI on their education and require different support than students fresh out of high school. Texans already in the workforce also need to be able to refine and hone their skills via continuing education and certification programs. Continuing to invest in Texans already in the workforce benefits Texas as a whole."

"There are many other hard-working parenting Texans out there who can thrive as I have with the right opportunities and targeted wraparound services and support. Affordable child care that worked for my schedule was just one of the many basic needs I was able to access through the Austin Community College Support Center. I was finally able to complete my associate's degree, pursue a career I love, and earn an income that will sustain the needs of my daughter and myself. As you continue your work as a Commission, please focus on the needs of working parents who want to further their education without sacrificing the basic needs of their families."



ISABEL TORRES

Austin Community College

Student Advisory Council Testimony to Texas Commission on Community College Finance



LA'KRISTIE DAVIS

Dallas College

"As the value and necessity of postsecondary education has increased, the state's investment in community colleges has continued to decline over the past 40 years. This decrease in state funding has contributed to the cost of college rising significantly faster than the growth in median income. This has made college less affordable and accessible for students and has caused more students to stop out, mainly affecting low-income first-generation students and students of color, and leaving others with enough debt to last a lifetime, such as myself."

"Finances for a college student are always a struggle, but even more so for parents like myself who are pursuing a degree to better provide for their families. As a parent who was working and going to school full-time, I have experienced many sleepless nights of self-doubt and many days of trying to stretch the minutes to complete my homework, be at work on time, and attend my classes. Along with financial aid and scholarships, degree-specific stipend programs, such as work-study partnerships, allow students like me to earn a paycheck at times that work around their class schedule while gaining valuable industry-related experience. My work-study experience gave me confidence that I could succeed in my chosen career path."



CRISTINA NAVARRO

El Paso
Community College

Discussion Question: What questions do you have for members of the Student Advisory Council?

TXCCCF Next Steps

- **July 17-19:** Workgroups will meet to draft recommendations.
- Next TCCCF meetings:
 - **September 12** (Austin) – presentation of draft recommendations
 - **October 18** (Austin) – presentation and approval of final report
 - **November** — delivery of report to Governor, Lt. Governor, and Legislature

Events & Resources

- June 28: E3 Alliance presents research on high school pathways associated with postsecondary success ([register here](#))
- [CCATT Conference resources](#), including TXCCCF presentation from Rep. Van Deaver
- Reinstating Pell for Incarcerated Students, including Lee College's Donna Zuniga ([video recording](#))
- Young Invincibles report on [Women and Parents in the Workforce: Building a Path to Apprenticeship](#)
- If you'd like to receive updates from the Commit Partnership on the TXCCCF, you can subscribe [here](#).